

# TREVERRA HOUSE

SLEEPS UP TO 10 GUESTS



# TREVERA HOUSE

SLEEPS UP TO 10 GUESTS

This spacious family home sleeps up to 10 guests, with generous entertaining space and spectacular views over the Camel Estuary towards Padstow. The west facing aspect means the house is flooded with light in the afternoons and with French doors leading onto a large terrace which is the perfect spot to enjoy the sunset over the water.

The elegant double height entrance hall sets the tone on arrival leading into the main reception rooms. The adjacent drawing room leads onto the terrace and has a large open fireplace and comfy sofas. Decorated in a neutral palette, this light and airy room is the perfect place to relax in. The interiors are full of antiques and interesting details and have been carefully curated by interior designer Marion Lichtig. They have featured in various publications including House & Garden and most recently the White Company coffee table book, The Art of Living with White. It is a much loved home, designed to be enjoyed with family and friends.





A photograph of a two-story stone house with a prominent chimney on the left. The house has a slate roof and several windows, some with white frames. In front of the house is a well-manicured garden with various plants, including tall grasses and flowering shrubs. A paved patio area with outdoor furniture is visible near the house. The background shows rolling green hills under a dramatic, cloudy sky.

Room to unwind and relax





The large open plan kitchen/dining area boasts a well-equipped Bulthaup kitchen with Wolf range, Sub Zero fridge and commercial Miele dishwasher. The dining space seats 12 comfortably and the table can be divided to accommodate up to 16 guests. Double French doors open out onto the terrace with barbecue and al fresco dining and spectacular views across the estuary.











A large book lined media room with laptop counter and plasma TV provides a cosy retreat and all mod cons. The property boasts high speed broadband throughout, 2 sky boxes and a Crestron music system









French windows open out onto a slate paved terrace, dining table  
and beautifully landscaped gardens overlooking the estuary.











On the first floor, there is a master bedroom suite with estuary views and ensuite bath shower. Two further double bedrooms look out across the water and share a bathroom with large rain ceiling shower. A super king bedroom with ensuite bath and shower and twin with bateau bath ensuite, complete the sleeping accommodation.









Set in an area of outstanding natural beauty on the edge of Rock, the landscaped gardens with deep borders and soft grasses provide a beautiful foreground to the views across the water. When rented in conjunction with the cottage across the garden it is a unique private resort with exclusive use of the tennis court and spectacular infinity pool.



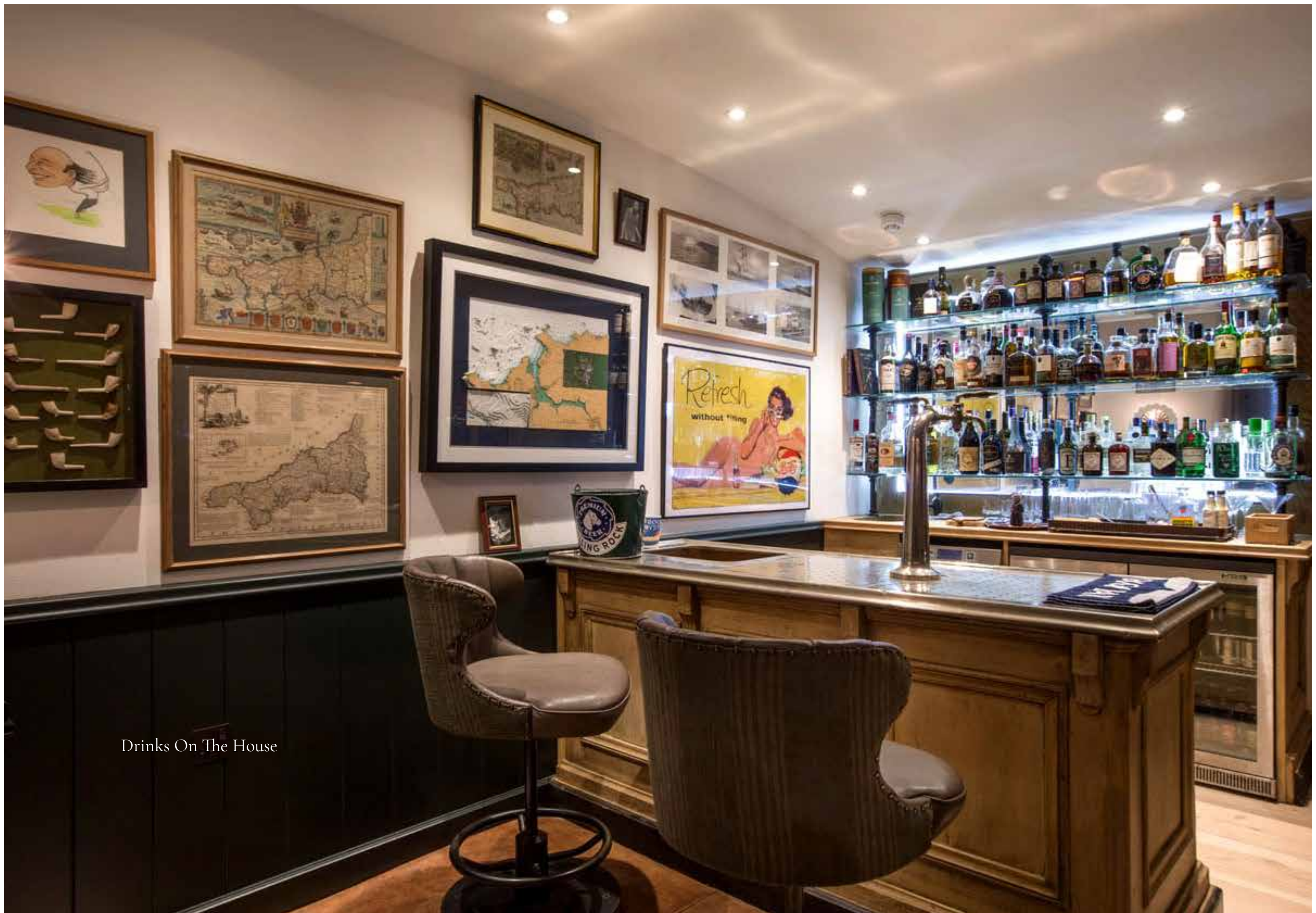


In the basement there is a large well equipped gym with spinning bike, versa climba, and weights and adjacent sauna and steam room with shower, to help warm up after long walks or sea dips. Finally, a well stocked bar and club room with vintage leather chairs, vinyl record deck and TV, offer an ideal party space or rainy afternoon refuge.





Drinks On The House

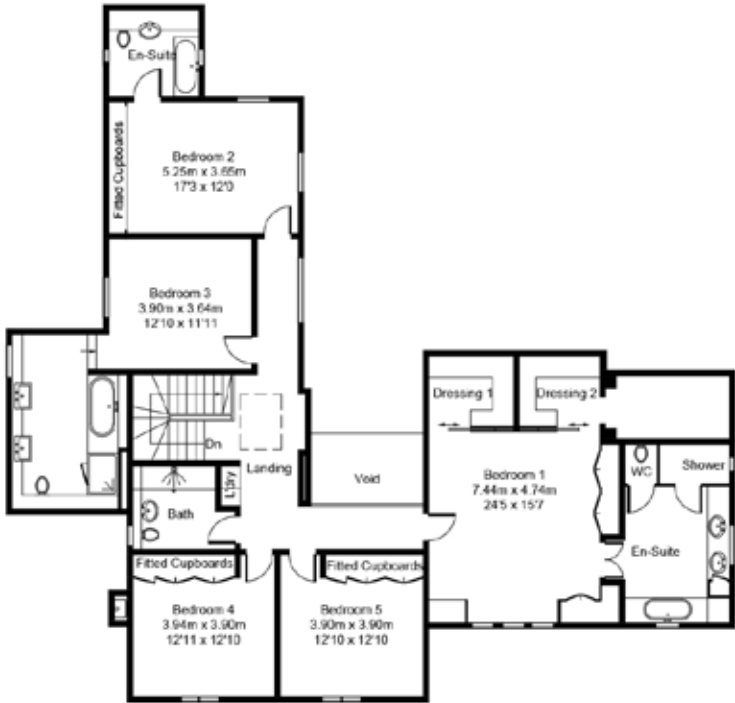
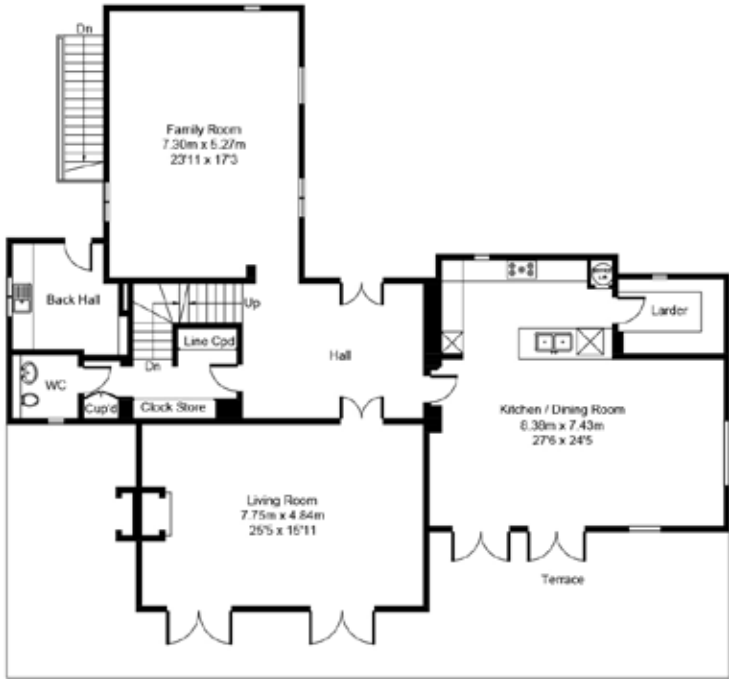






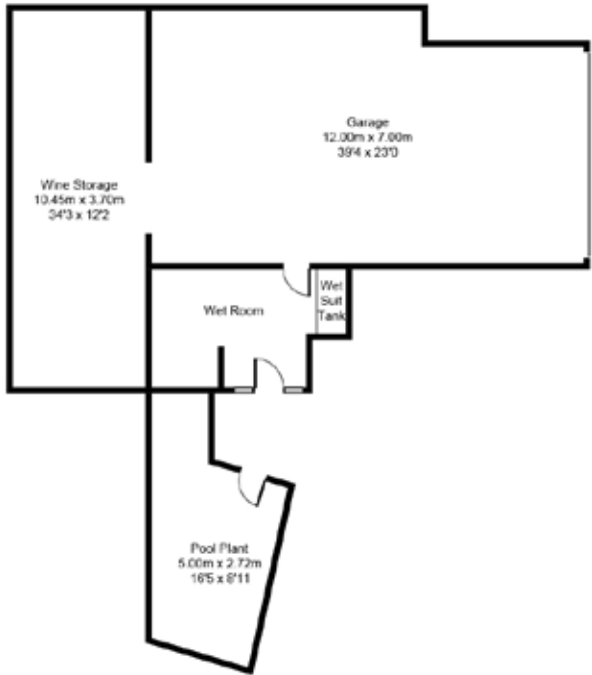


Treverra House Floorplans - 10 guests

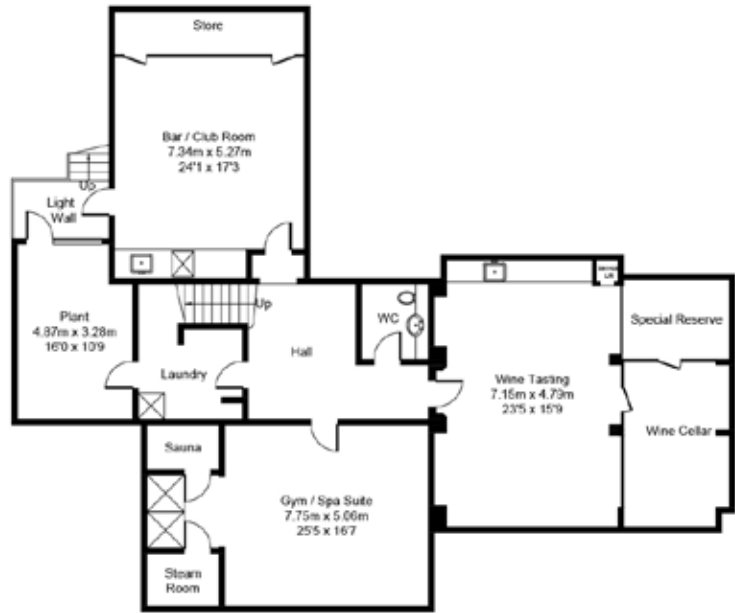


Ground Floor

First Floor



Ground Floor



Basement / Cellar Floor